



COMMUNICATION & GRAPHIC DESIGN

PORTFOLIO 2024



LCE ADDED VALUE

With a **dedicated in-house team**, we are able to **enhance Sustainability Reports** through **customized graphic layouts**, combining **technical skills and environmental expertise** with creative vision and a comprehensive reporting experience.

OUR GRAPHIC AND COMMUNICATION TEAM



WE MAKE COMPLEX CONTENTS SIMPLE

Designing:



SUSTAINABILITY REPORT



BROCHURE



FLYER



MOTION GRAPHIC VIDEO



WHAT ARE THE BENEFITS

of the communication and graphic design services?

The **integration of technical results/inputs** with communication and graphic design activities have several **positive aspects**:

GUARANTEE

uniformity both in terms of content and appearance.

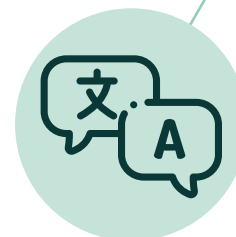


DESIGN

the layout and infographics in close collaboration between the teams, right from the beginning and in parallel with the definition of the contents.

TRANSLATE

complex topics into simple concepts by making them memorable.



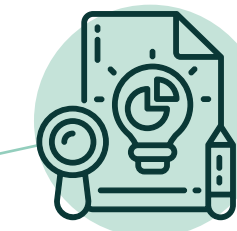
ORGANIZE

the collected data and the results in a visual form, simplifying the production process and reducing delivery time.



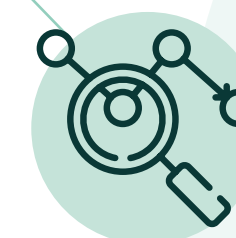
HIGHLIGHT

the technical contents with graphic elements, ensuring perfect coordination with the text development.



OFFER


a clear preview of the layout document development, allowing graphic adaptation and error correction in real time.




#EPD ResultsOverview

AMB

[click here to see the full document](#)



AMB Sustainability Path: IMPACT MEASUREMENT



Designed to be different

In our world where the environment and our place in the sustainable circular economy have become more important than ever, we have an active agenda to participate in the most complex sustainability challenges within packaging production.


OUR FIRST STEP IS TO MEASURE AMB PRODUCTS' IMPACT THROUGH LCA APPROACH AND EPD CERTIFICATIONS.

LCA

An ISO standard methodology that assess the **environmental impacts** of a product or a process throughout its life cycle, starting **from raw materials** production to use and **end of life** phases.


The LCA approach provides a production system overview and the environmental effects along its **entire supply chain**. It equally considers different forms of impact: **polluting emissions, use of resources, energy consumption and waste production.**

LIFE CYCLE ASSESSMENT



EPD

A third party certification communication tool that enables **comparison of LCA analyses' results**. The preparation of EPD always passes through a series of rules by reference standards, more specifically the EPD general program instructions and the **Product Category Rules (PCR)**.

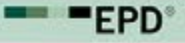


ENVIRONMENTAL PRODUCT DECLARATION

WHICH ARE THE EPD FUNDAMENTAL INFORMATION?

- Description of the company and the products with reference to performances
- The system boundaries considered for the analysis of the environmental impact
- A clear list of the environmental indicators used to express the impact, highlighting each cycle phases contribution to the overall impact

WWW.ENVIRONDEC.COM





The products examined in this study fall into the **"industrial type packaging"** category, as they are sold as reels without branded printing. The products are designed to be converted into trays/containers and used mainly for packaging food products.

MULTILAYER PET/PE/EVOH/PE

500 µm Thickness

A PET film laminated with flexible PE films with EVOH barrier which allows for a longer shelf life products packed in vacuum packaging or modified atmosphere.






THE ONES EXAMINATED IN THESE EPDS ARE


All environmental impacts refer to 1m² of film products

MONOLAYER PET HB

450 µm Thickness


The high barrier mono PET is a coextruded mono PET with an oxygen scavenger that inhibits the air passing through the film.





73%

PRESENCE OF RECYCLED PET




83%

1,2

GLOBAL WARMING POTENTIAL (GWP)

Greenhouse gases emitted along the entire life cycle
kgCO₂ / 1m² of film

0,9




-20%

22,8

ABIOTIC DEPLETION POTENTIAL FOSSIL FUELS (ADP-F)

Decreasing availability of fossil fuel resources
MJ / 1m² of film



15,5



-47%

The Life Cycle Assessment study has been performed through a **"cradle-to-gate with options"** approach, from resource extraction to the factory gate.

The products' transportation to customers in reels form and the final disposal at the end-of-life stage have also been considered. The thermoforming process is outside the system boundaries and therefore it has not been included in the study.



Use this QR code to download our EPD Document
HIGH BARRIER MONO PET HB

ambpackaging.com





#Sustainability Report

AQUAFIL

[click here to see the full document](#)



#FLW Report

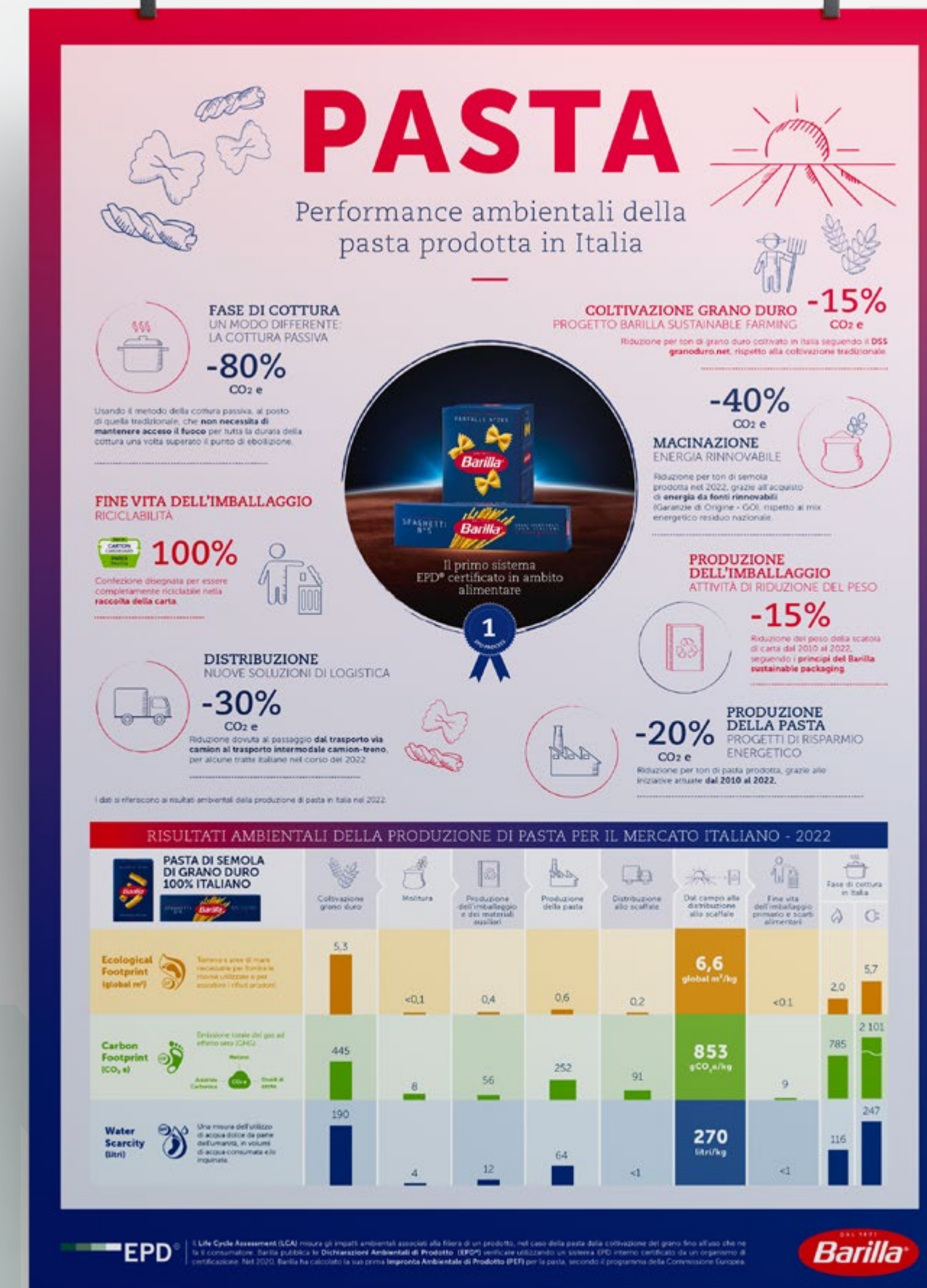
BARILLA

[click here to see the full document](#)



#Storytelling days
BARILLA

[click here to see the full document](#)



CE

#Barilla environmental communication

MULINO BIANCO

[click here to see the full document](#)





#Sustainability Report DANONE

[click here to see the full document](#)



#CFP Report

DORNA

[click here to see the full document](#)



CARBON
FOOTPRINT



#Sustainability Report

FEPA

[click here to see the full document](#)





Report di
sostenibilità

Figura 1 - Dati

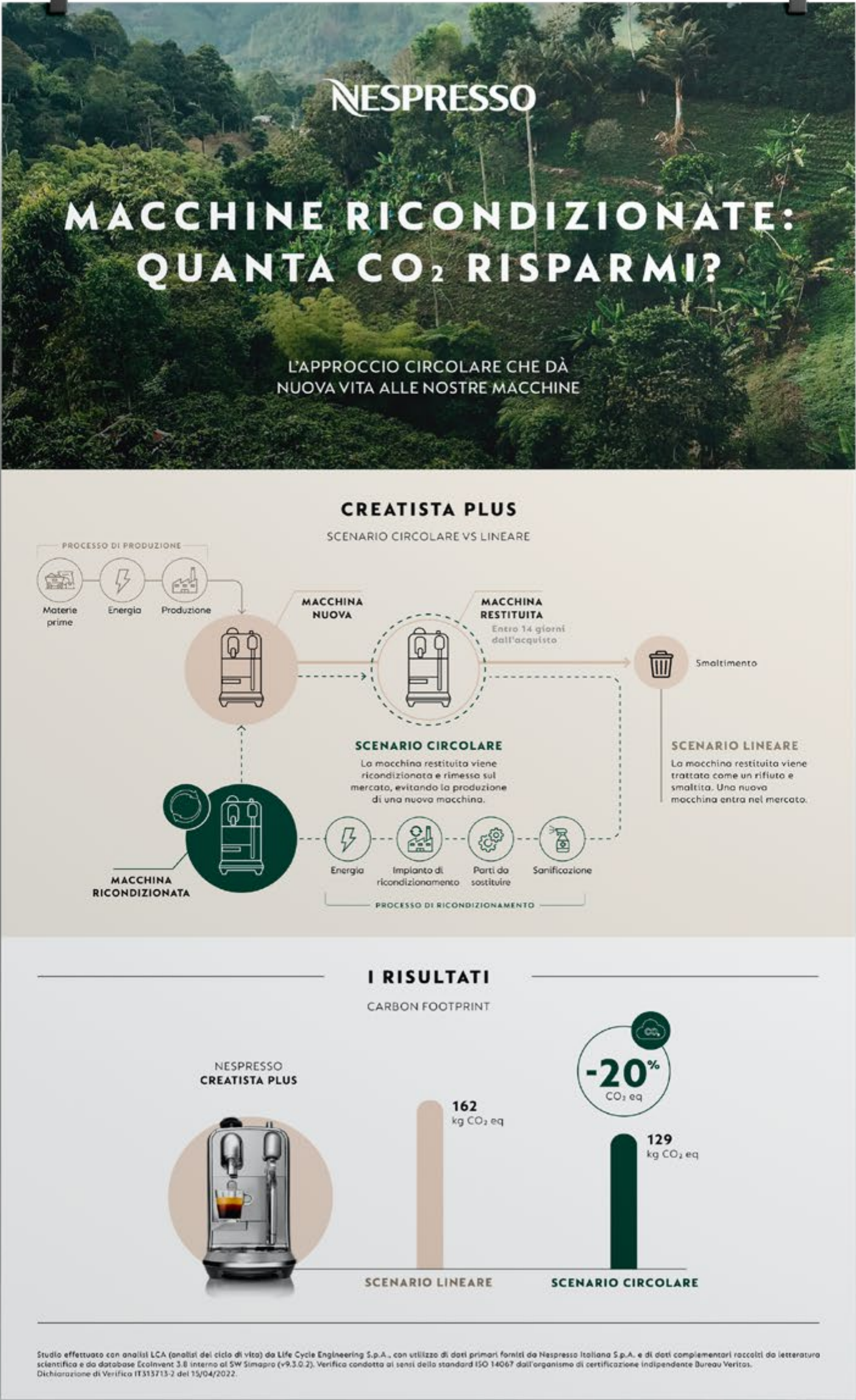
Categoria	Valore
73	73



#Infographic

NESPRESSO

[click here to see the full document](#)



#Sustainability Report OROGEL

[click here to see the full document](#)





#Company brochure

UNIONE ITALIANA FOOD

[click here to see the full document](#)



#Sustainability Report VICENZI

[click here to see the full document](#)



#Motiongraphic CO₂Focus EUPROJECTS

[click here to see the full video](#)



VIDEO
INFOGRAPHIC

LCE



lcengineering.eu

For more information:

denicolo@studiolce.it | distasi@studiolce.it

